

# **AirTrain LGA**

**Community Meeting**  
**August 10, 2021**

- Federal Aviation Administration (FAA) Record of Decision (ROD) issued – July 20, 2021
- On-airport work – beginning Summer 2021

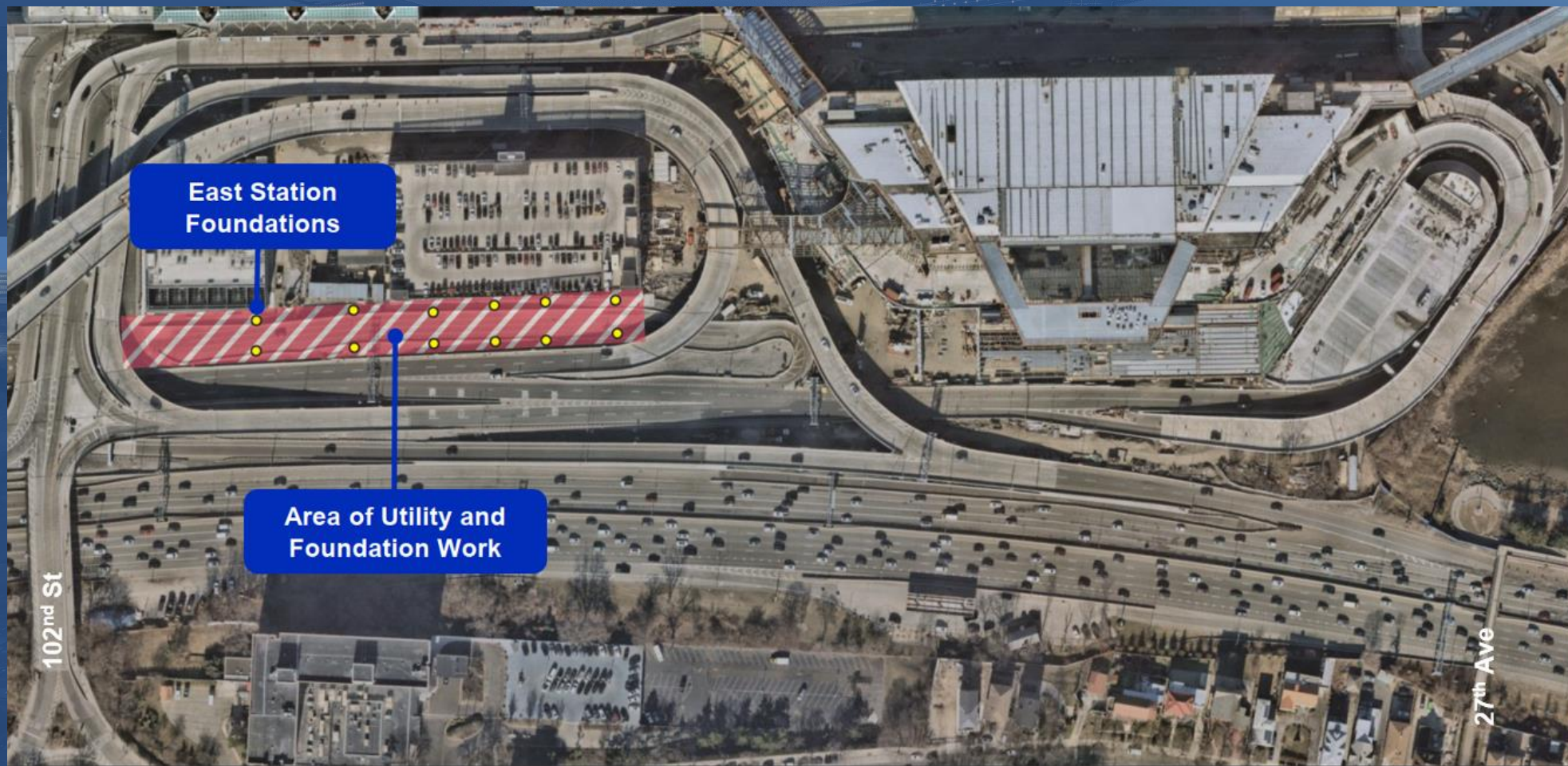


# Construction: Key Community Benefits

- Workforce development
  - Pathway for local residents to union construction jobs
  - 80% target for local hiring (zip codes 11368 and 11369) for operations, maintenance and management positions
- Contracting opportunities
  - Over \$500M in contracting opportunities anticipated for MBE / WBE / SDVOB and local (Queens-based) businesses
- The Port Authority will seek to exceed the MBE / WBE / LBE goals with an MWBE specialist from the local community and programming related to certification, training, and capacity building throughout the design, construction and commissioning of AirTrain LGA



# Upcoming On-Airport Construction: Overview





# Upcoming On-Airport Construction: Method

- Drilled caissons planned construction method for the upcoming on-airport foundation work for AirTrain East Station





# Other Unrelated Work in Surrounding Area

- Unrelated to AirTrain LGA, construction is on-going for Delta's Terminal C program as part of the LGA Redevelopment Program
- The Delta construction work for the new Concourse F will utilize pile-driving at certain points in time that may overlap with the upcoming on-airport AirTrain East Station construction
- Test piles are anticipated in August 2021, followed by production piles tentatively scheduled in October 2021 for Delta Concourse F





# Mitigation Overview

- The Port Authority and its contractors working on AirTrain LGA construction will be required to comply with all mitigation measures set forth in the FAA's Final EIS and ROD as applicable
- The mitigation implementation will be detailed in reports to be prepared by the Port Authority twice a year and posted on the AirTrain LGA webpage



# Pre-Construction Surveys

- There are no occupied off-airport structures located within the area of potential vibration-related annoyance impacts for the drilled caisson construction method for AirTrain East Station foundations
- Although no vibration impacts are anticipated due to the distance of the construction zone from local residences and the construction method, out of an abundance of caution, pre-construction surveys will be offered through independent contractor LS Tech Land Surveying & Engineering for 12 residences on the northside of Ditmars Blvd from 104-41 to 105-51 Ditmars Blvd
- LGA Redevelopment Program community outreach office has begun contacting residents to offer pre-construction surveys





# Pre-Construction Surveys

- For the remainder of AirTrain LGA construction, which will include use of driven piles at various locations, the Port Authority will offer pre-construction surveys to all structures identified in the Final EIS as having the potential for construction vibration-related annoyance impacts during construction
- A much larger area and number of facilities will be offered pre-construction surveys prior to the start of the remainder of AirTrain LGA construction (see purple shaded areas)



Note: Image is from the Final EIS but the legend has been modified for purposes of this presentation

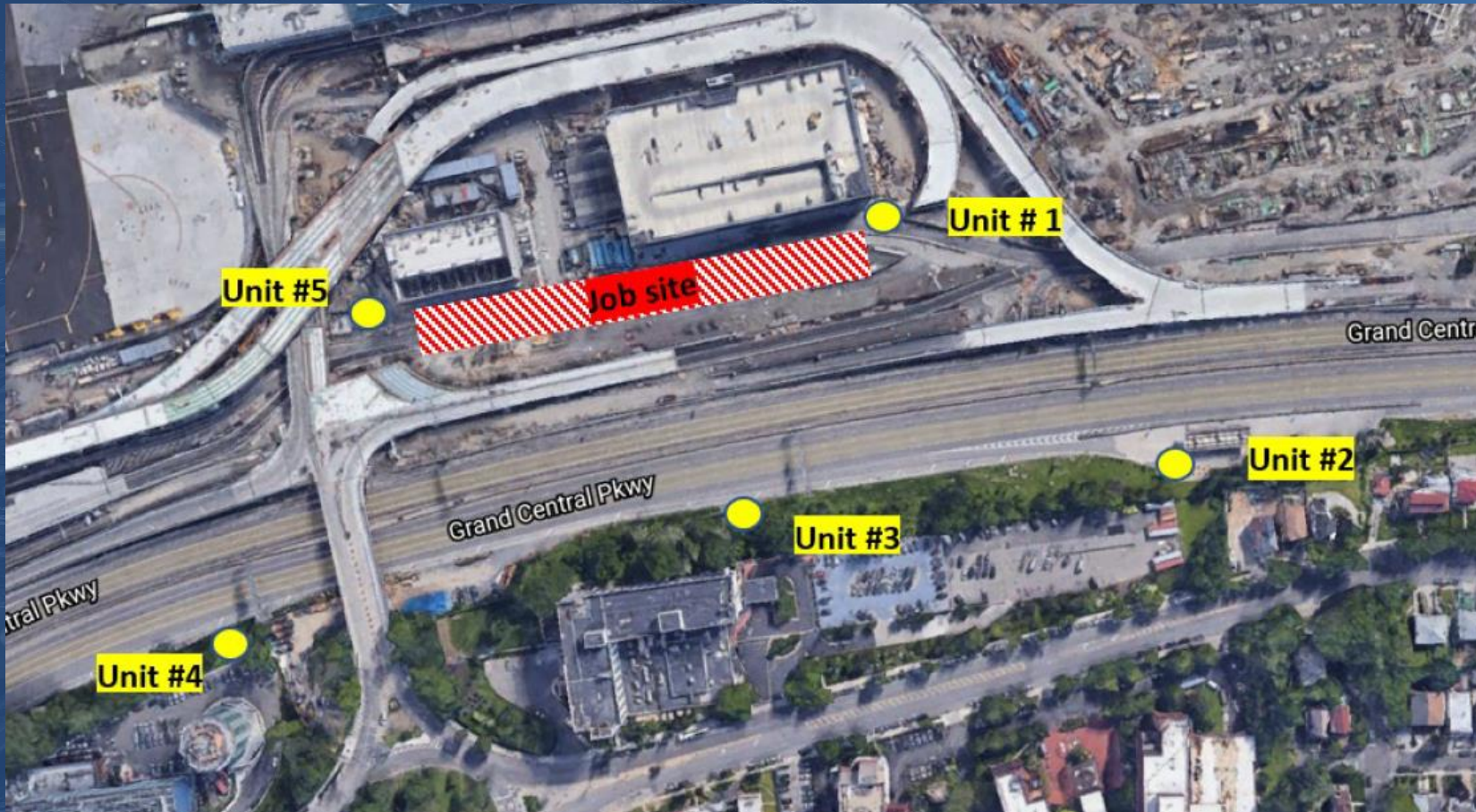


# Noise and Vibration Monitoring

- Contractors will be required to adhere to construction requirements set forth in the Final EIS to minimize construction noise and vibration impacts
- Independent contractor, NYCO Environmental, will set up a total of five noise and vibration monitors for upcoming on-airport AirTrain construction
- Noise and vibration monitors will be located near the on-airport construction site (two) and within the community (three) during the upcoming on-airport construction
- Work will be stopped in any instances of vibration threshold exceedances attributable to AirTrain construction
- Baseline readings will be completed prior to the start of construction and a report will be available for review on the AirTrain LGA webpage
- Port Authority is seeking feedback on the proposed locations for monitors in the community during the upcoming on-airport construction



# Proposed Noise and Vibration Monitors



Proposed noise and vibration monitor locations for upcoming on-airport construction:

- 1) Southeast of the Parking Garage Terminal C
- 2) Exit service road by the gas station
- 3) Eastern side of the Marriott Hotel
- 4) West side of the 102<sup>nd</sup> St bridge by the Aloft Hotel
- 5) Southwest of the electrical plant (under new roadway)

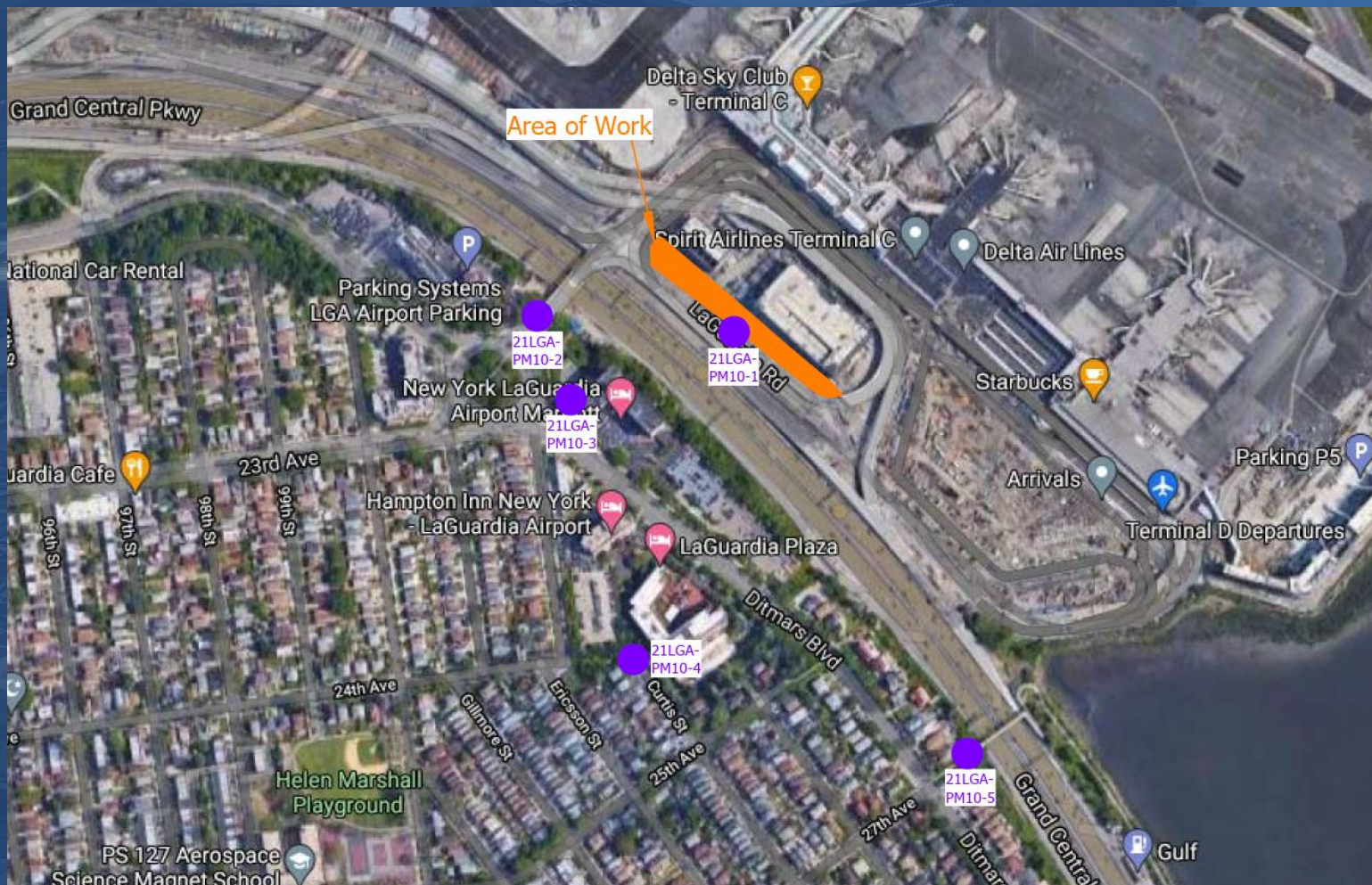


# Air Quality Monitoring

- Contractors will be required to adhere to construction equipment requirements set forth in the Final EIS to minimize air quality impacts
- Independent contractor, AMC Engineering, will put in place one PM 10 air monitor at the perimeter of the construction site to measure air quality during dust-generating construction activities
- Although not required by the FAA, the Port Authority has requested that AMC Engineering also put in place PM 10 monitors at four locations within the neighboring community
- Baseline readings will be completed prior to the start of construction and a report will be available for review on the AirTrain LGA webpage
- Port Authority is seeking feedback on the proposed locations for monitors within the community



# Proposed Air Quality Monitors



Proposed air quality monitor locations for upcoming on-airport construction:

- 1) At the construction site
- 2) North-side of roundabout at the intersection of Ditmars Blvd/102<sup>nd</sup> St/23<sup>rd</sup> Ave
- 3) Southeast-side of roundabout at the intersection of Ditmars Blvd/102<sup>nd</sup> St/23<sup>rd</sup> Ave
- 4) At the dead end on Curtis Street (from 25th Avenue)
- 5) South-side entrance of pedestrian bridge near Ditmars Blvd/27<sup>th</sup> Ave



# Upcoming On-Airport Construction: MWBE Contracts

Role	Vendor	Location	M/WBE
Prime Construction Contractor	Gateway Demo/Civil Corp	Hicksville, NY	MBE (Hispanic)
Air Monitoring	AMC Engineering PLLC	Astoria, Queens	MBE (Hispanic)
Noise and Vibration Monitoring	NYCO Environmental	Islandia, Long Island	WBE
Pre-Construction Surveys	LS Tech Land Surveying & Engineering PLLC	Elmhurst, Queens	MBE (Black)
Borings	Jersey Boring & Drilling Co., Inc.	Fairfield, New Jersey	WBE

For more information on minority, women-owned, and local business enterprises opportunities, please contact Emanuela Sanchez at [emsanchez@panynj.gov](mailto:emsanchez@panynj.gov)

There will be an MWBE/LBE Information Session and Networking Event scheduled for September, more information to follow



- Third annual STEM program for 50 local middle school students in partnership with Langston Hughes and East Elmhurst branches of the Queens Public Library concluded July 30, 2021
- Funding for community programming in local parks in consultation with East Elmhurst Corona Civic Association to begin 2021
- Next round of college scholarships expected to be awarded Spring 2022
- Information about opportunities for local residents to enroll in construction trade pre-apprenticeship programs to come in Fall 2021
- Council for Airport Opportunity (CAO) LGA Career Center funded through 2025



# Ongoing Design Efforts

- Passerelle Bridge Replacement
  - Preliminary design package approved by New York City Public Design Commission (PDC)
  - 90 percent package submittal to PDC anticipated in Q3 2021
- Marina Facilities Relocation
  - Preliminary design package approved by PDC
  - 90 percent package submittal to PDC anticipated in Q3 2021
- Promenade Improvements
  - Public and stakeholder engagement efforts ongoing
  - Concept design under development
  - Next public meeting on concept design anticipated September 2021



# Q&A and AirTrain LGA Hotline

- Questions?
- If community members have feedback about proposed air, noise and vibration monitor locations for the upcoming on-airport construction, please provide by August 13<sup>th</sup>
- AirTrain LGA community hotline: 929-445-4225 or [awholenewlga@panynj.gov](mailto:awholenewlga@panynj.gov)
- AirTrain LGA webpage: <https://www.anewlga.com/airtrain/>